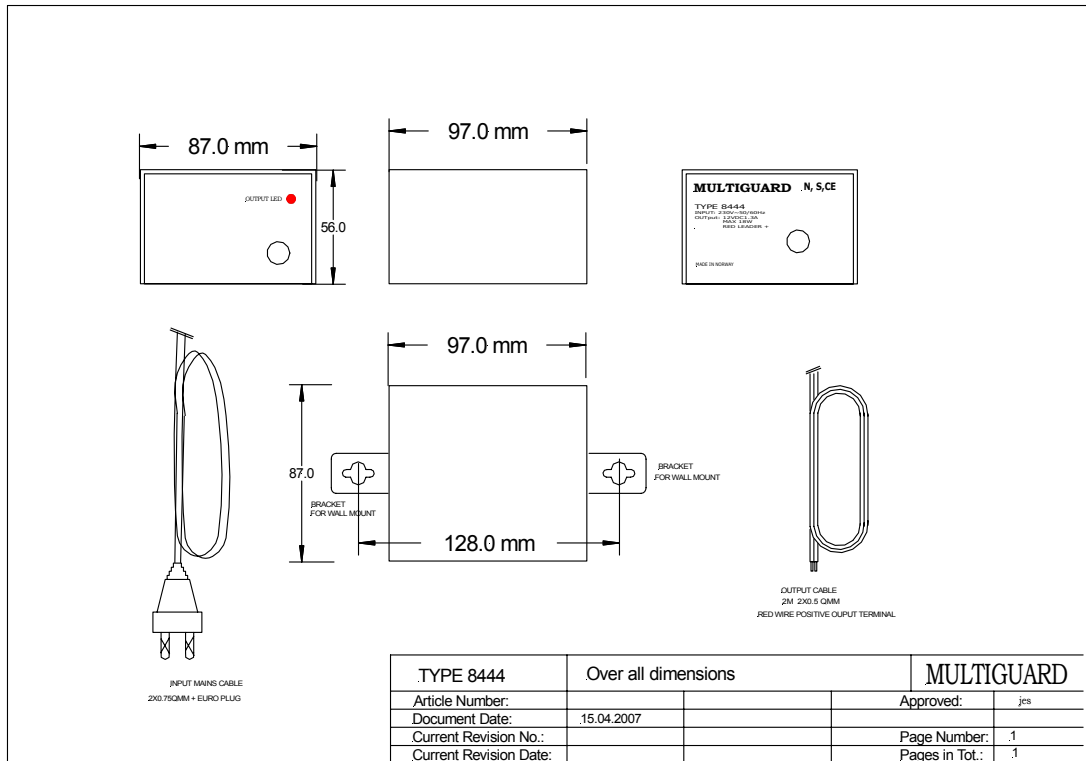


| | | |
|---------------------------------|--|--|
| Document | | MULTIGUARD |
| <i>Product Identifier</i> | <i>Description</i> | |
| DeskTop Model 12V18W | AC/DC linear regulated Power Supply | TYPE 8444 Art.: 844112183 |



| | | |
|-----------------------|--|--------------------------|
| Input voltage | 230V AC+/-10%, 48-63Hz | |
| Output voltage | 12Vdc | |
| Output current | Max.1,5A at 12VDC output | |
| Efficiency | 65% minimum at maximum load | |
| Peak inrush current | < 1A within 10ms | |
| Operating temperature | -10°C to +40°C | |
| Storage temperature | -20°C to +75°C | |
| Load regulation | 3% for 0 to 100% load change | |
| Line regulation | 2% for specified input voltage variation at 50% output power | |
| Output ripple | 200mVp-p maximum at maximum load | |
| Output current limit | 300% max. load and thermal fuse(int.regulator) | |
| Safety standard | EN 60950, EMK-TUE(12B-SEC)205/91, NEMKO Cert.A88836 and ref. CCA/NO 01514, CENELEC | |
| Safety class | II | |
| Emission standards | EN 50083-1,EN 60555-2 ref. NEMKO: 199608153 | |
| Indications | Red LED-power on | |
| Dimensions | Weight | 97 x 87 x 56 mm 840gr. |
| Mounting method | DeskTop model | |
| IP class | IP20 | |

| | | | |
|-------------------------------|------------|---------------------|-----|
| <i>Article Number:</i> | 844112183 | | |
| <i>Document Date:</i> | 21.12.2006 | <i>Approved:</i> | jes |
| <i>Current Revision no.:</i> | | <i>Page Number:</i> | 1 |
| <i>Current Revision Date:</i> | | <i>Tot. pages:</i> | 2 |

| | | | |
|---------------------------------|--|--|--|
| Document | | | MULTIGUARD |
| <i>Product Identifier</i> | <i>Description</i> | | |
| DeskTop Model 12V18W | AC/DC linear regulated Power Supply | | TYPE 8444 Art.: 844112183 |

| | |
|-----------|----------------------|
| Terminals | Input- output cables |
|-----------|----------------------|

| | | | |
|-------------------------------|------------|---------------------|-----|
| <i>Article Number:</i> | 844112183 | | |
| <i>Document Date:</i> | 21.12.2006 | <i>Approved:</i> | jes |
| <i>Current Revision no.:</i> | | <i>Page Number:</i> | 2 |
| <i>Current Revision Date:</i> | | <i>Tot. pages:</i> | 2 |